

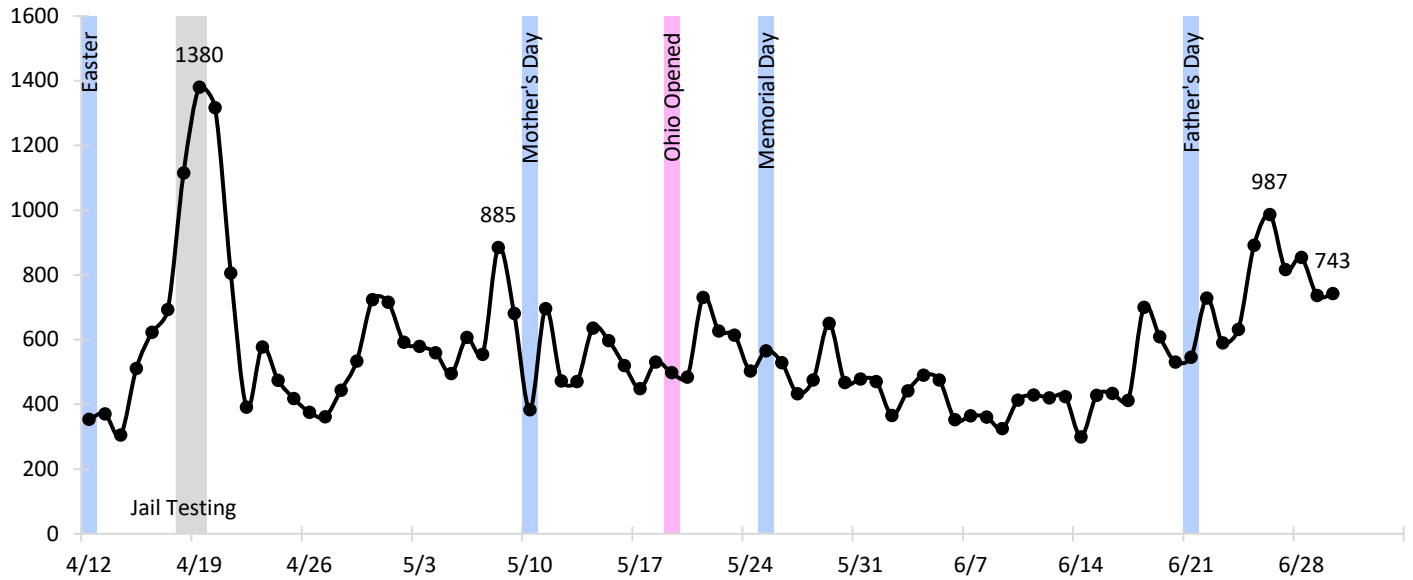
COVID-19 Weekly Update

Prepared by Krista Westrick Payne, PhD

Current Trends in Ohio | State-Level

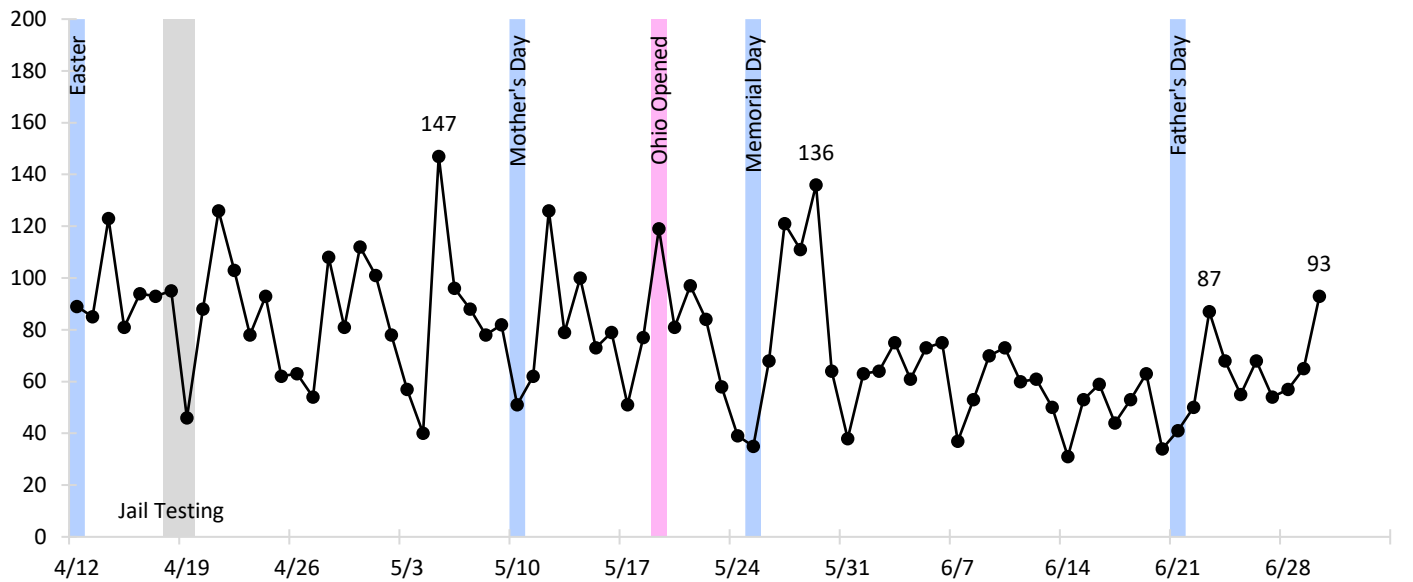
Daily

Trend in 24 Hour Reported Case Change (Includes Probable Cases)



Data Source: Ohio Department of Health State of Ohio COVID-19 Dashboard

Trend in 24 Hour Reported Hospitalization Change



Data Source: Ohio Department of Health State of Ohio COVID-19 Dashboard

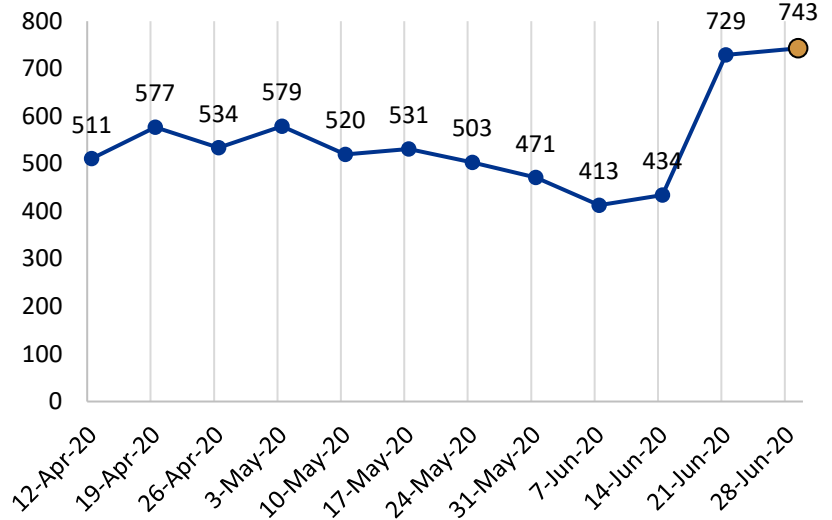
COVID-19 Weekly Update

Prepared by Krista Westrick Payne, PhD

Weekly Cases

- Last week’s median marked a slight increase in the average daily new cases—from a median of 413 a day to 434 a day.
- Since last week, the average daily increase has grown by nearly 300 cases—from a median of 434 a day to 729.

Trend in 24 Hour Reported Case Change - Weekly Medians (Includes Probable Cases)

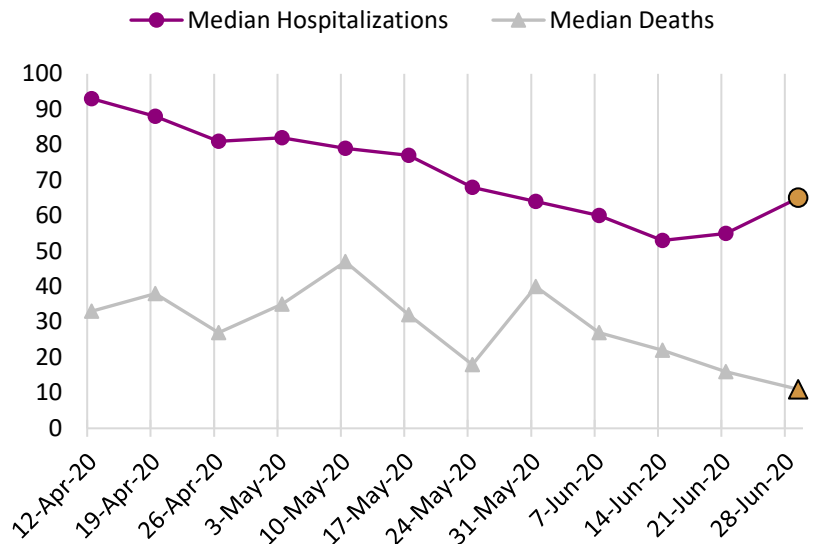


Data Source: Henry County Health Department analysis of Ohio Department of Health State of Ohio COVID-19 Dashboard

Weekly Hospitalizations & Deaths

- The average daily increase in hospitalizations last week is slightly higher than the prior week—increasing from a median of 53 to a median of 55.
- This is the first increase in median hospitalizations since I began computing the medians in mid-April. This increase comes two weeks after the slight uptick in cases.
- Deaths continue to trend down.

Trend in 24 Hour Reported Hospitalization and Death Change - Weekly Medians



Data Source: Henry County Health Department analysis of Ohio Department of Health State of Ohio COVID-19 Dashboard



COVID-19 Weekly Update

Prepared by Krista Westrick Payne, PhD

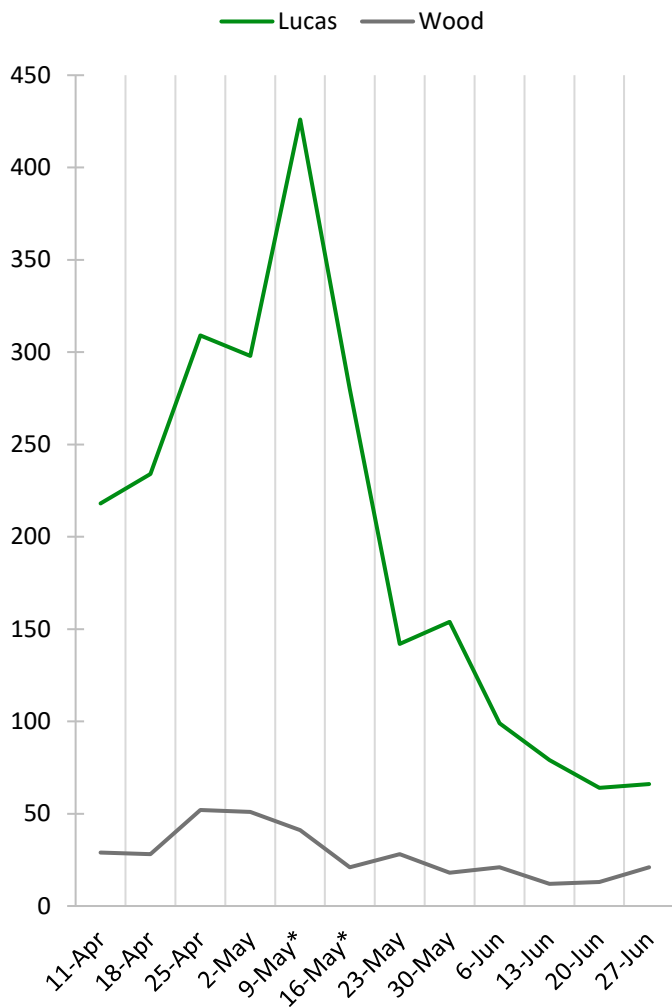
Current Trends in Ohio | County-Level

Weekly Totals for Henry County and Neighboring Counties

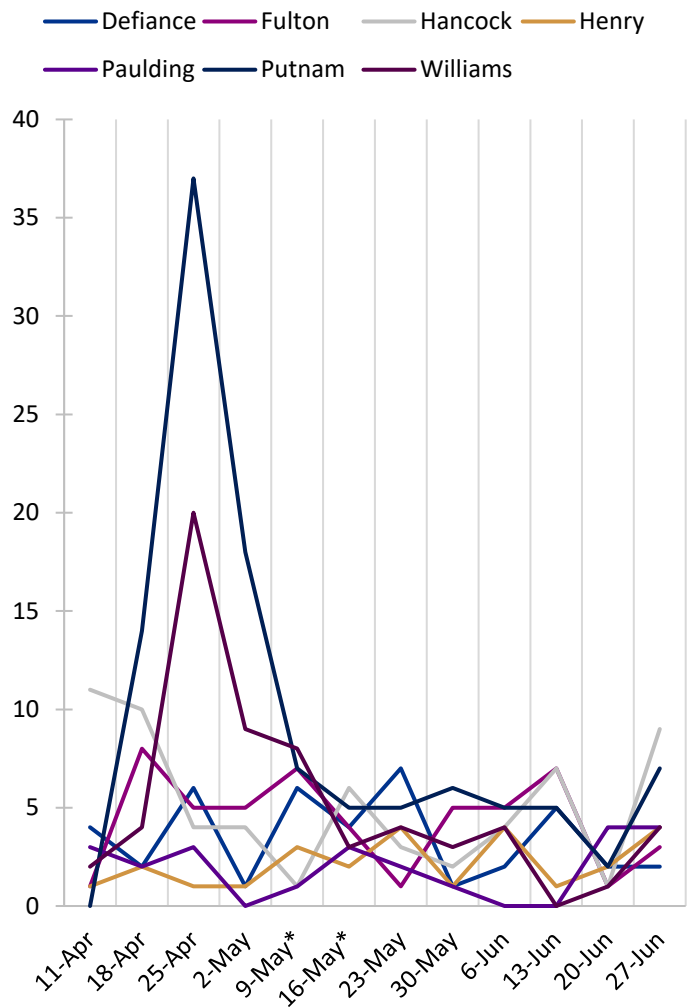
- ALL counties are trending up, *except* for Defiance and Paulding which had the same reported number of total cases this week as last week.

Note: The axes of the two figures below are NOT the same. While they are both reporting number of total confirmed cases, Wood and Lucas Counties have much higher values than Henry and the other counties.

Saturday-to-Saturday Change in Reported Cases (Including Probable) by County



Saturday-to-Saturday Change in Reported Cases (Including Probable) by County



Data Source: Henry County Health Department analysis of Ohio Department of Health State of Ohio COVID-19 Dashboard



COVID-19 Weekly Update

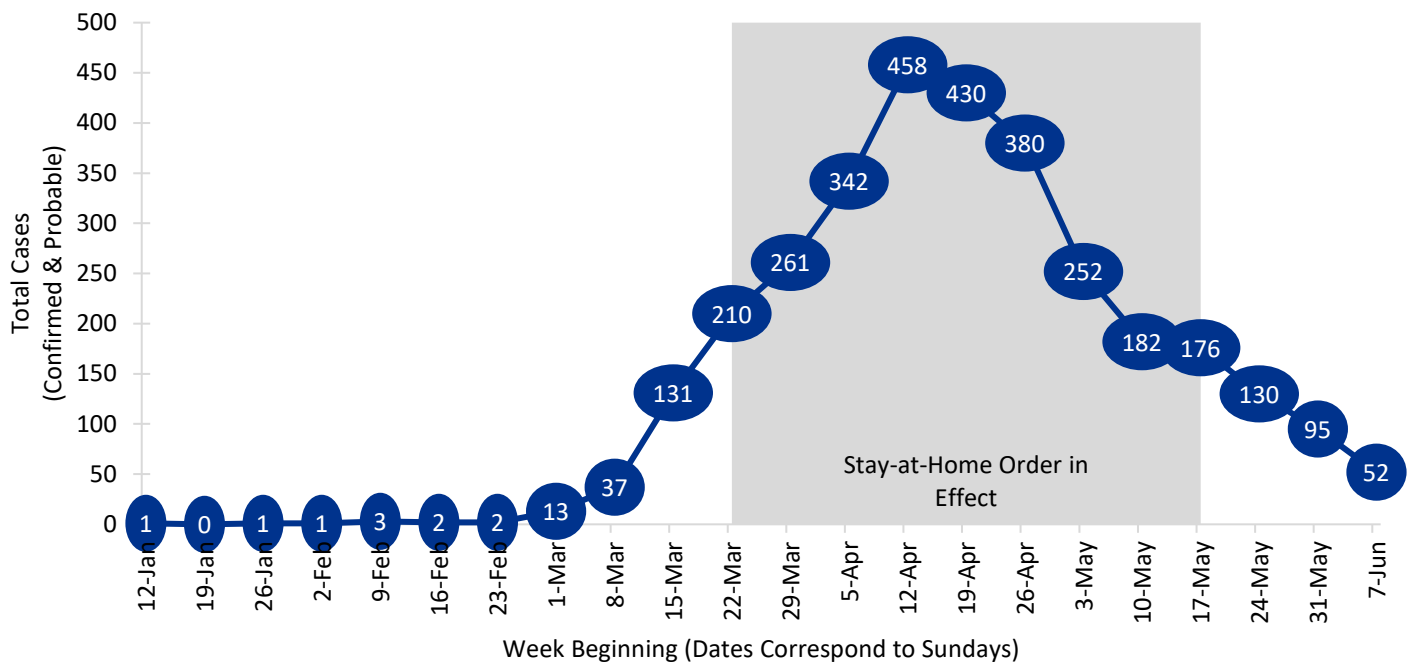
Prepared by Krista Westrick Payne, PhD

Date of Onset Weekly Totals for Henry County and Neighboring Counties

Last week I began to do a weekly update based on date of onset. This figure looks at the cumulative (across county) of weekly identified cases for Henry County and its neighbors. Like before, due to small sample sizes I have chosen to only show cumulative counts. I have excluded the two most recent weeks because of data timing issues regarding exposure, onset, and testing

- Our area's peak in cases came nearly three weeks after the stay-at-home order went into effect. Furthermore, after our peak of 458 cases in one day, our area has seen a decline in daily cases by date-of-onset.

Trend in Cases by Date of Onset for Henry County and Neighbors



Data Source: Henry County Health Department analysis of Ohio Department of Health State of Ohio COVID-19 Dashboard

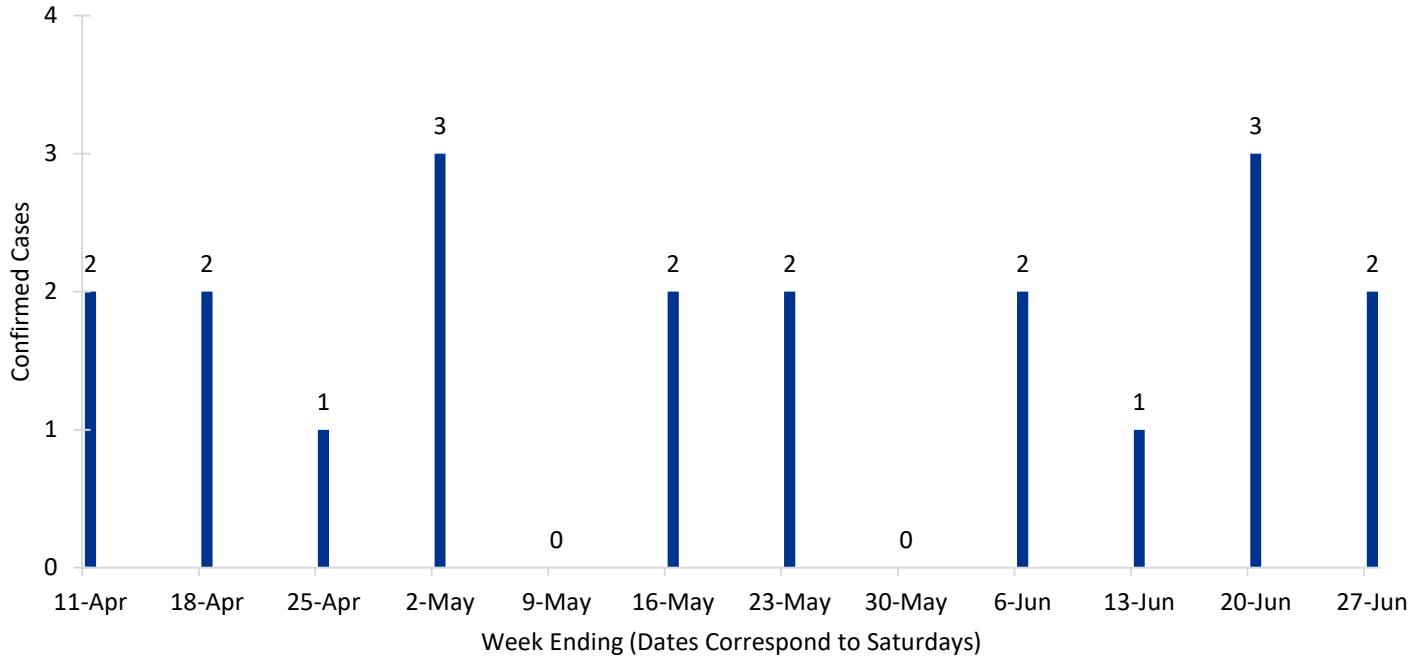
COVID-19 Weekly Update

Prepared by Krista Westrick Payne, PhD

Henry County's Confirmed Cases

- Finally, this last figure shows the trend in weekly confirmed COVID-19 cases for Henry County, alone.

Weekly Total Confirmed COVID-19 Cases for Henry County, Ohio



Data Source: Ohio Department of Health State of Ohio COVID-19 Dashboard