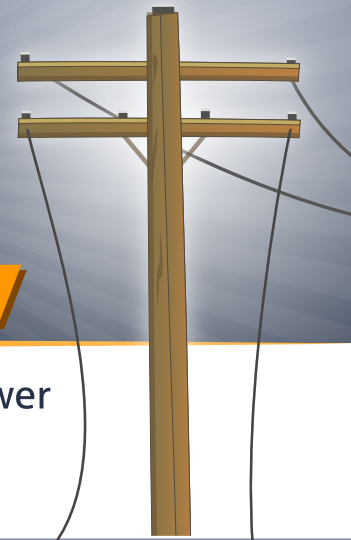


ALWAYS ASSUME **LIVE**

ALL DOWNED LINES ARE



Downed power lines can be **deadly**. Always assume a downed power line is **live** and avoid approaching them or anything near them.

Use Precaution



Downed power lines can energize the ground up to **35 feet** away. Even more in wet conditions.



If you see a downed power line, **call 911**.



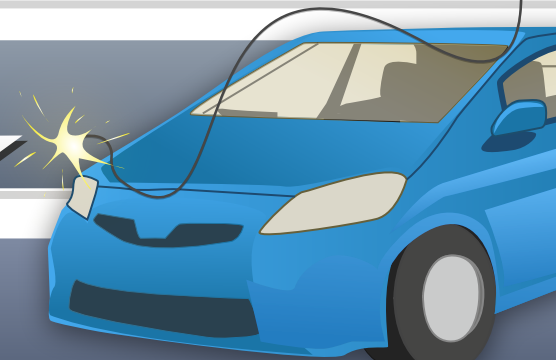
Never drive over downed power lines or anything in contact with them.



Never try to move a downed power line.

If a vehicle contacts a **power line** or **utility pole**...

STAY AWAY AND CALL 911



Consider **all lines** to be live and dangerous.



Stay in place or inside your vehicle unless you see **fire** or **smoke**.



Warn others to stay at least **35 feet** away.



Tell others not to approach vehicle, downed lines, or anything that may be in contact with downed lines.



Call **911**.

In the Event of Fire or Smoke

Do not touch the ground and vehicle at the **same time**.



Jump from the vehicle with your **feet together**.



Shuffle away, avoid lifting your feet.



Please share this free content to save lives



www.facebook.com/ESFI.org

www.twitter.com/ESFI dot org

www.youtube.com/ESFI dot org